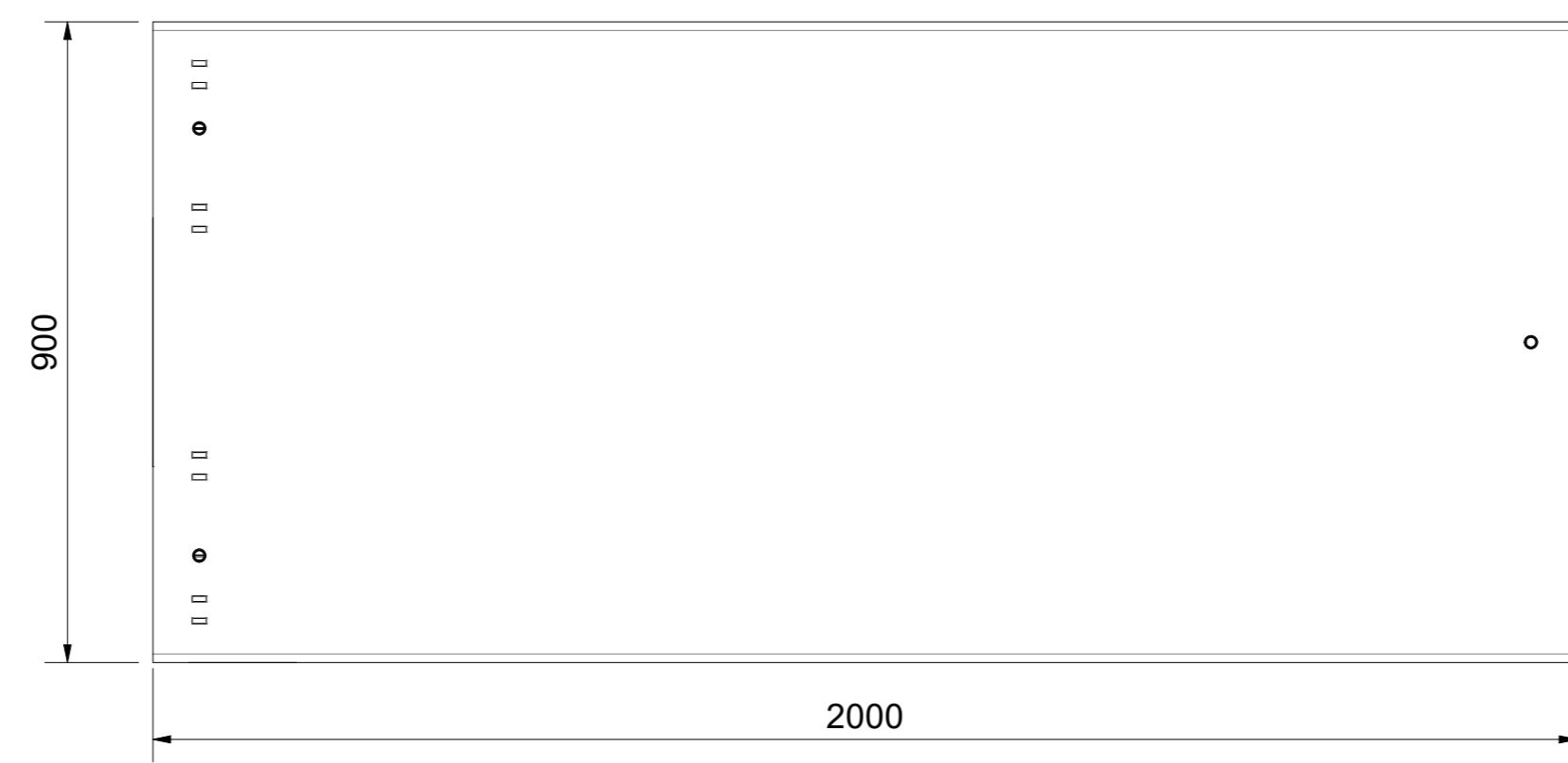
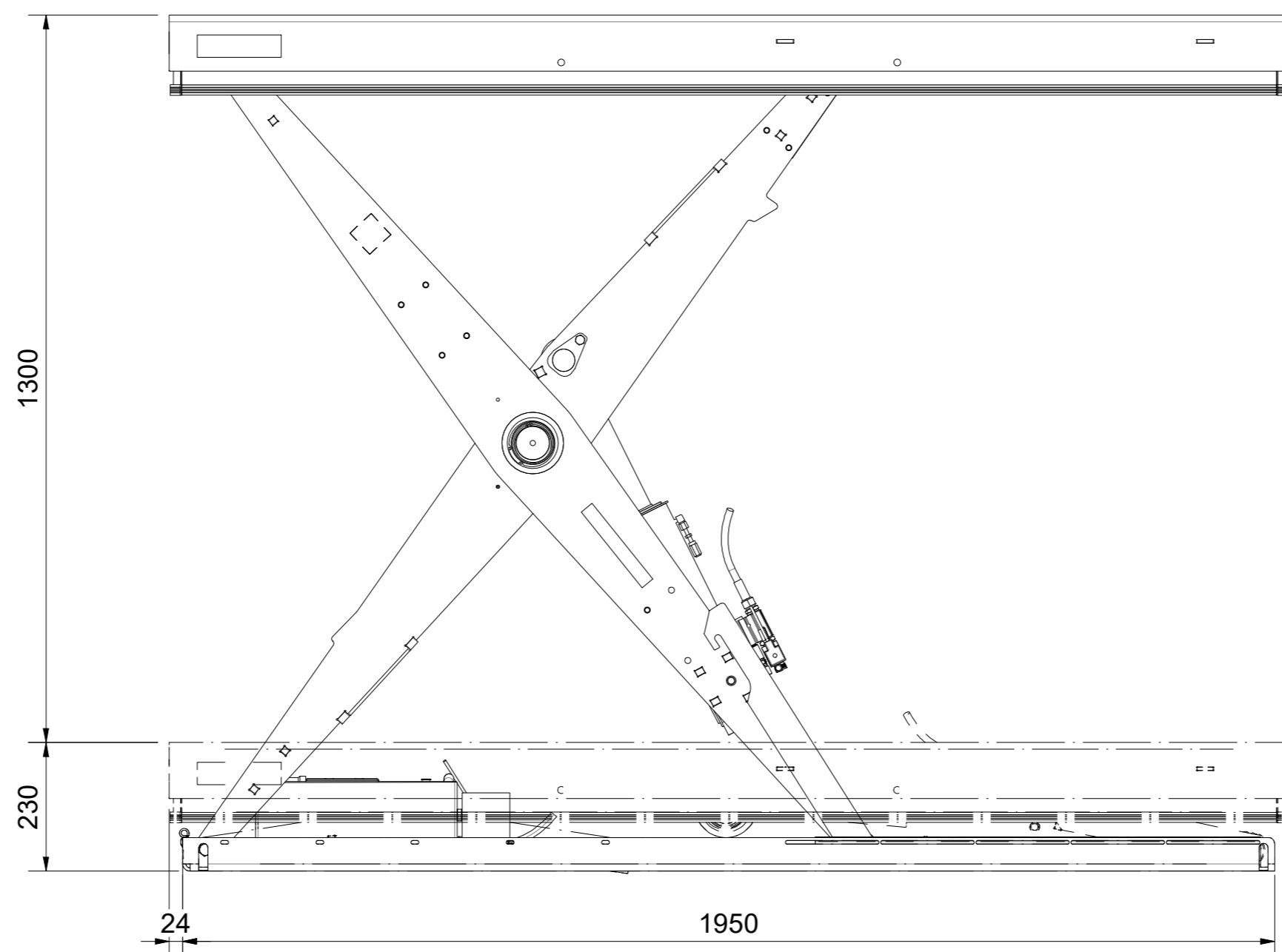
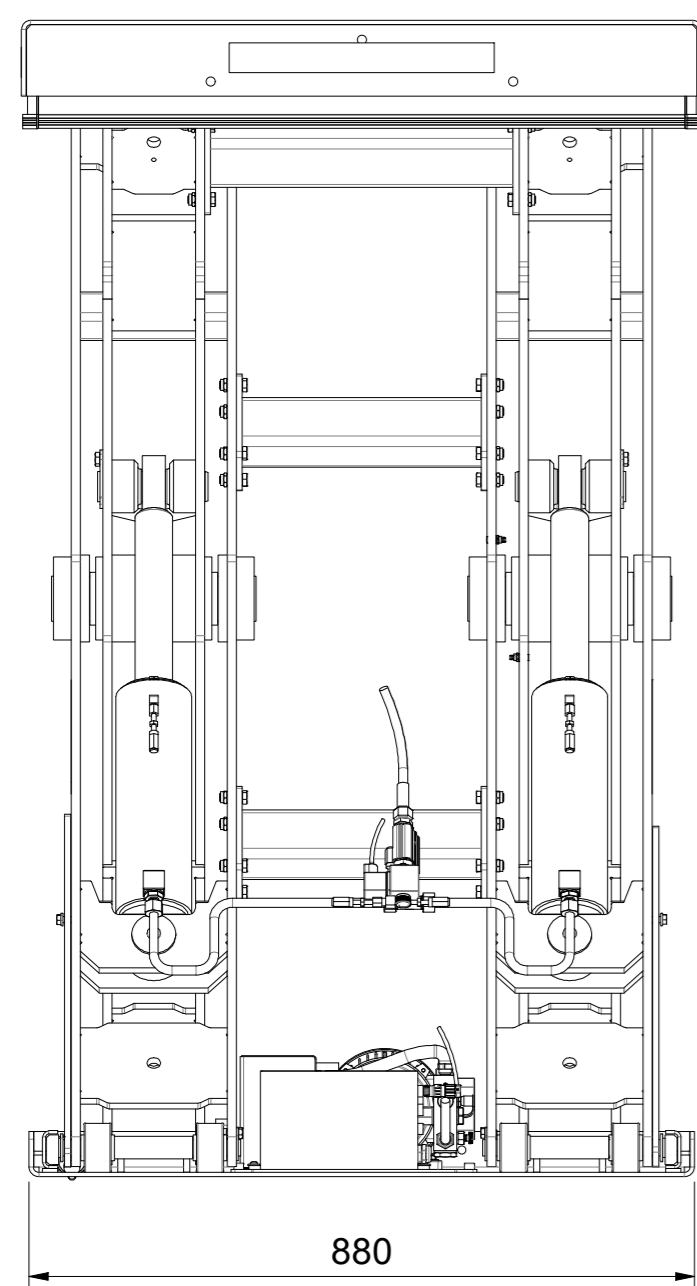


Revision History				
Rev	Revision note	Date	Rev no	Sign
A	Updated to reflect changed made to 614833	2021-06-15	8251	LENRO



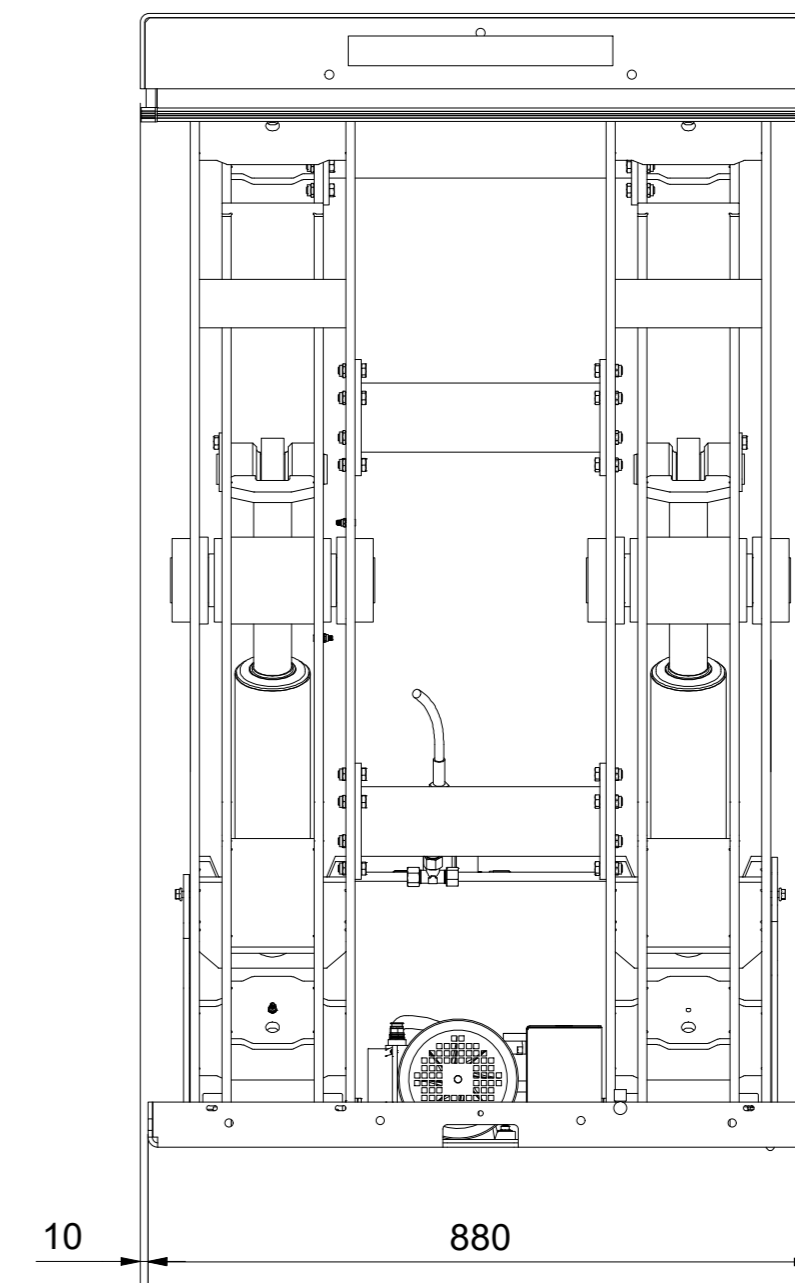
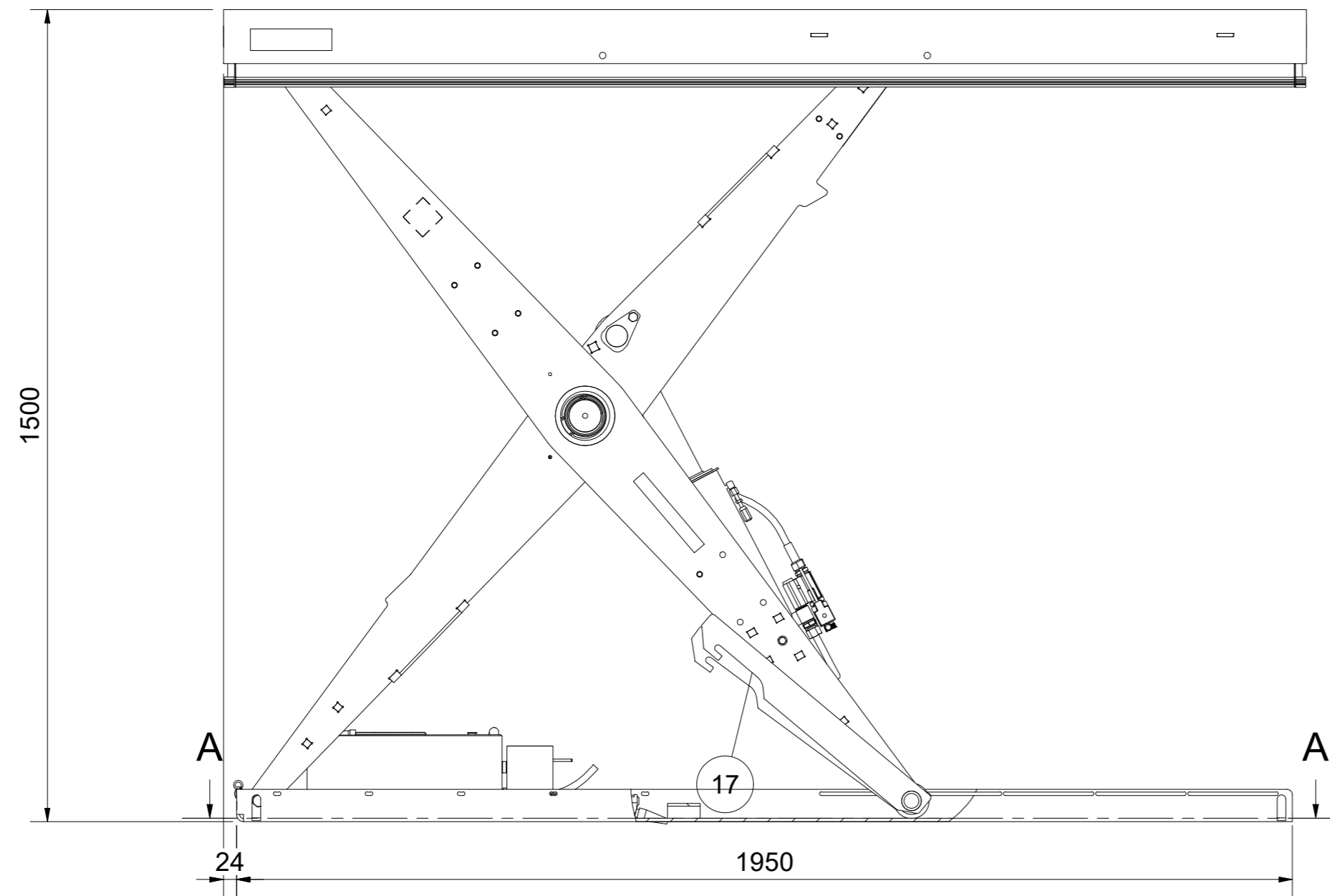
54		Hydraulic schematic	45235	
53	2	Hexagon screw	84381	M6S M10x16 8.8 FZB
52	4	Screw	82393	M6S M8x16 8.8 A4-80
51	1	Nut	84089	M6M M6 FZB
50	1	Carriage Bolt_utgär	85232	MVBF M6x20 4.6 FZB
49	1	Rubberclip	85799	13MM
48	2	Scissor	615020	
47	1	Crossmember	615018	
46	4	Socket screw	85254	MC6S M8x10 8.8 FZB
45	1	Control unit	38102-02	UC60 ES-2-HK 3m
44	2	Decal	33269	Language set at order
43	2	Decal	32707-20	Max. Load 2000 kg
42	2	Decal	32708	Edmolift Logotype medium
41	2	Decal	84400	Load cases
40	2	Hexagon taptite screw	84042	M6SF-TT - M8x20 FZB
39	2	Starlock 22	84005	
38	2	Cap	86145	Ackurat fothuv grupp XC # UKB22S svart
37	4	Washer	84349	Serrated Lock Washer DIN6798A 6,4x11x0,7
36	4	Locknut	84088	LM6M M6 FZB
35	4	Screw	85726	M6x25 HCS FZB
34	24	Screw	84181	M6S M10x30 FZB 8.8
33	24	Locknut	83209	LM6M M10 FZB
32	1	T-Connector	88640	6mm SKF 223-12484-9
31	5	Hose stud straight	87698	
30	5	Sleeve	87699	
29	2	Elbow	87693	M6x1
28	1	Hydraulic Power Pack Steel Tank	614833	H6-4, 3-phase, 400V, 1,5kW, VE31
27	1	Hydraulic Hose	48050	3/8" 12L L=1000 mm
26	1	Plug M12M	85905	4-pol
25	2	Skruv	87085	K6S M10x20
24	2	Washer	43757	Ø58/11x4 fzb
23	1	Hydraulic Valve VE14	34886-3	
22	1	Hydraulic Pipe with fitting	615036	
21	1	Hydraulic Pipe with fitting	615038	
20	1	Fitting	84366	T12 -L
19	1	Wiring harness	36328-1500	M12M-valve L=1500 mm
18	2	Cross Member	615009	
17	2	Spärr	33048+200	
16	2	Spacer Ø30/24	45136-20	6063 T6 alum. Ø30/24 L=20
15	2	Axle Pin	615008	
14	1	Safety Frame	612039	2000x900, 2 switches
13	2	Axle Pin	615005	Ø40 L=139
12	2	Hydraulic Cylinder	615050	HC 90-240
11	2	Axle Pin	615002	
10	1	Platform	615040	2000,0 mmx900,0 mm C-C 550,0 mm
9	2	Spacer Ø30/24	45136-104	6063 T6 alum. Ø30/24 L=104
8	8	Wheel	614309	
7	16	Bearing, flange Ø22/28/34x20 PA	70025	Ø22/28/34x20 PA
6	2	Axle Pin	615043	
5	8	Spacer	45414-22	Ø15/19,8x22
4	8	Flange Bearing	89228	Ø20/26
3	8	Locknut	83245	LM6M M14 FZB
2	8	Screw	84881	M6S M14x55 FZB 8.8 ISO4014
1	1	Base Frame	615030	

Item	QTY	Description	Item no / Doc no	Designation / Dimension / Material / Note
GA		Drawn	LENRO	Date 2021-01-27
Scissor Lift Table		Scale	1:10	Est. weight N/A
HDA 2000 (2000x900)		Sheet Number	1 / 3	

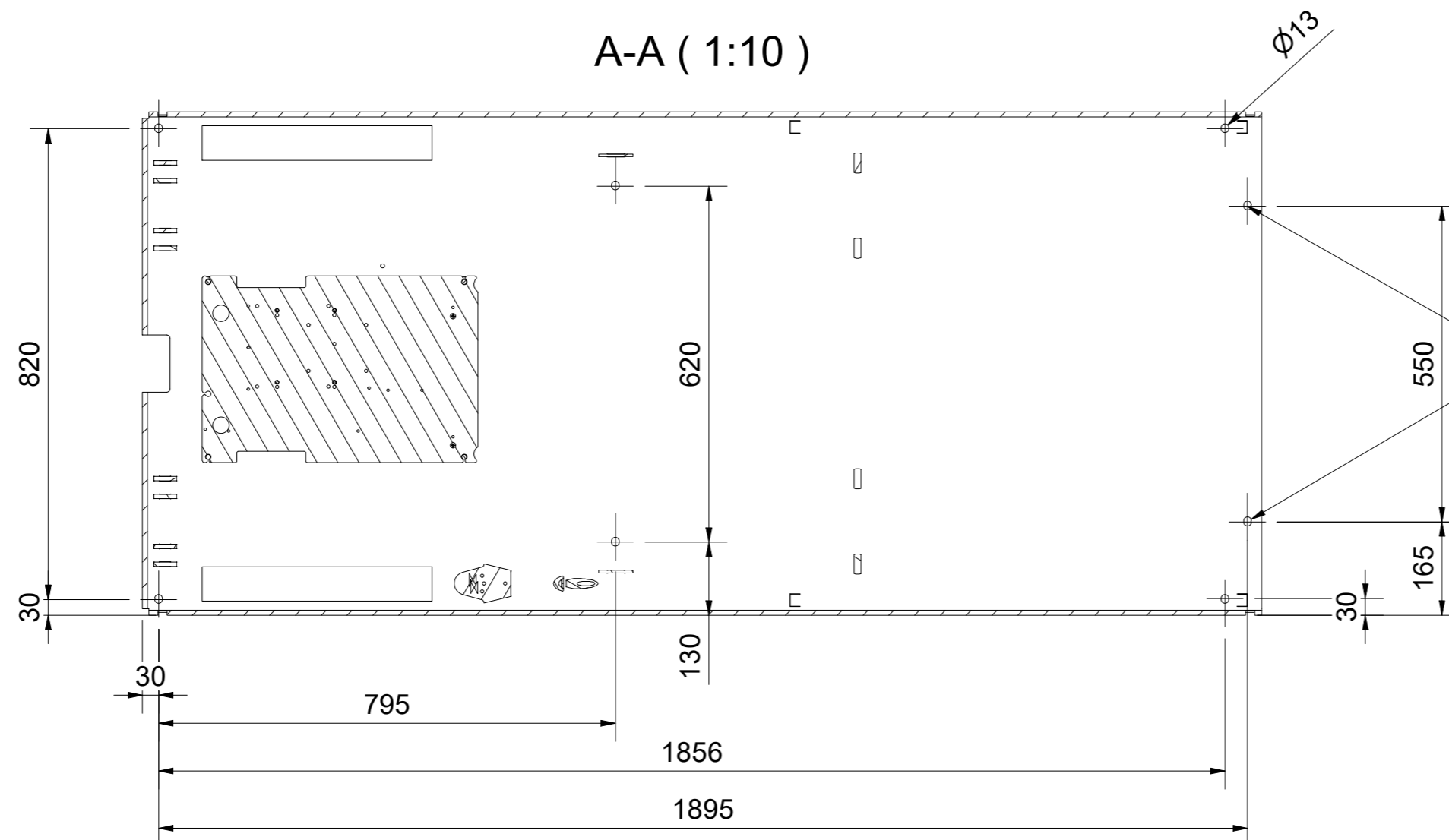
	General tolerances for dimensions without indication according to ISO 2768-m	System Inventor	Drawing no	Revision
		Sheet size A2	615010	A

This document must not be copied without our written permission, and the contents thereof must not be imparted to a third party nor be used for any unauthorized purpose. Contravention will be prosecuted.

Maintenance position




A-A (1:10)

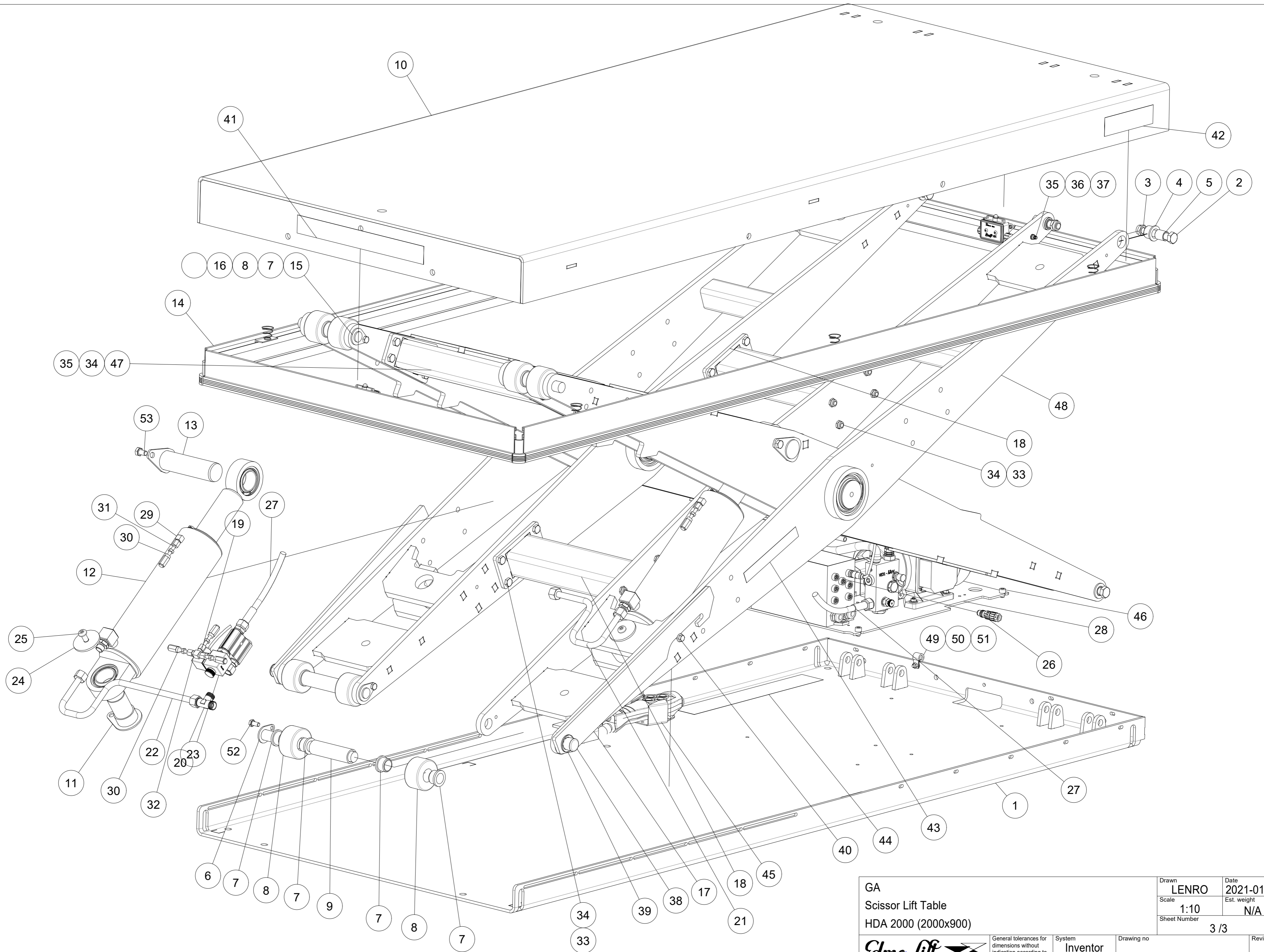


Recommended to fix lift table to floor using M12x65 (6x).


Only used when lift table is equipped with tipping protection.

GA		Drawn	LENRO	Date	2021-01-27
Scissor Lift Table		Scale	1:10	Est. weight	N/A
HDA 2000 (2000x900)		Sheet Number	2 / 3		
 General tolerances for dimensions without indication according to ISO 2768-m	System	Inventor		Drawing no	615010
	Sheet size	A2		Revision	

This document must not be copied without our written permission, and the contents thereof must not be imparted to a third party nor be used for any unauthorized purpose. Contravention will be prosecuted.



This document must not be copied without our written permission, and the contents thereof must not be imparted to a third party nor be used for any unauthorized purpose. Contravention will be prosecuted.

GA		Drawn	LENRO	Date	2021-01-27
Scissor Lift Table		Scale	1:10	Est. weight	N/A
HDA 2000 (2000x900)		Sheet Number	3 / 3		
 <small>www.edmolift.se</small>	General tolerances for dimensions without indication according to ISO 2768-m	System	Inventor	Drawing no	615010
		Sheet size	A2	Revision	