

# Work Positioner - WP ONE

The WP ONE has been masterfully designed to fit the most common and important usage areas and at the same time be offered at a very low price. The WP ONE allows the operator to place, position, move and remove the load in a simple, safe and sturdy fashion. The WP ONE comes with the best-selling wooden platform, made of marine plywood, and has countless areas of usage in almost any setting. The WP ONE is delivered in one single cardboard box. You just take it out, follow the few simple steps in the quick guide and you have your WP ONE up and running in no time. We keep the WP ONE in storage, always ready for instant delivery!

## BOX CONTENT

- ▶ Mast with motor
- ▶ Handle with control unit
- ▶ Wooden platform
- ▶ Legs
- ▶ Charger
- ▶ Assembly kit for easy self-assembly with 12 fasteners
- ▶ User manual
- ▶ Quick guide



Handle with control unit

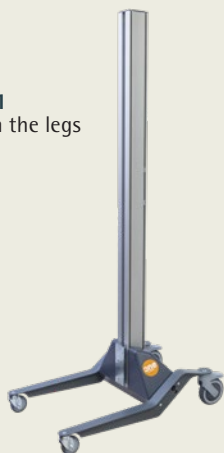
Model	Art. no.	Capacity kg	Max platform height mm	Lowest height mm	Length mm	Width mm	Height mm	Platform LxW mm	Lift time mm/sec	Batteries	Charger	Weight kg	Note
▶ WP ONE	89503	70	1505	120	846	379	1700	434 x 418	125	24V 7,2Ah	2A/24V	30	

Price includes: Charger and wooden platform (LxW 434x418 mm).

Lift capacity valid for evenly distributed load.

## Get started in three easy steps

**STEP 1**  
Attach the legs



**STEP 2**  
Attach the handle



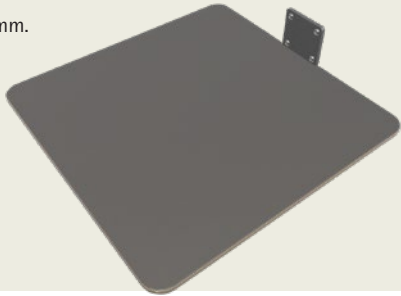
**STEP 3**  
Attach the platform and the WP ONE is ready to go



## Tools and options - WP ONE

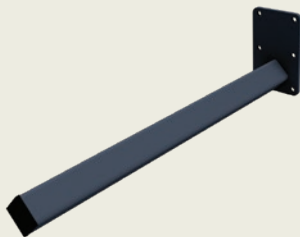
### Wooden platform (included)

Dimensions LxW 434x418 mm.



### Reel mandrel

Length 500 mm, 40x40 mm.



Art. no.: 614744 **WP ONE**

### Canister tipper 25 liter

Designed for standard size 15, 20 and 25 liter canisters. The canister is attached to the carrying handle with a hook. Lifts and rotates the canister to empty its content. Rotation 360° with adjustable interval of 30° or 90°. Lift capacity 40 kg.



Art. no.: 89481 **WP ONE**



## Work Positioners - WP by EdmoLift



### POWERFUL WORK POSITIONERS DESIGNED FOR HEAVY LIFTING

The Swedish-made lift trolleys in the WP by EdmoLift series have been developed to provide the operator with the opportunity to easily lift, transport, and position heavy objects, all under perfect ergonomic conditions. With lift capacities up to 200 kgs, the powerful lift trolleys in the new WP by EdmoLift series have many areas of usage while the design of the trolleys entails unbeatable mobility and ergonomics. With the many accessories available, the WP by EdmoLift series offers you the market's most universal and solid lift trolleys that can be easily adjusted to fit your needs.

#### MAST AND LIFT FUNCTION

The mast is made up of anodised aluminium with a steel sledge with precision ball bearings, the

lifting trolleys are fitted with strong energy-efficient 24VDC motors and powered by a steel reinforced belt that does not need any special maintenance.

#### CONTROL UNIT

The lift trolleys are fitted with soft start and stop for safe and precise load handling, they are easy to use with a distinct button on the control unit.

#### SAFETY

All parts are shielded. The lift has overload protection and safety circuit. The lifters are supplied with a smart charger which automatically stops charging the battery once it is fully charged.

#### PRODUCT FEATURES

- ▶ The market's fastest lifting speed – 125 mm/sec
- ▶ Outstanding manoeuvrability
- ▶ Soft start and stop
- ▶ Silent operation
- ▶ Wide range of tools and options such as platforms, canister tippers, v-cradles and control units.
- ▶ Operationally reliable - steel reinforced belt instead of chain
- ▶ See page 81-87 for stainless alternatives



Easy to use control unit with battery indicator

# Work Positioners - WP by EdmoLift

► Other leg frames are available upon request.



WP 130

WP 130EM

WP 200

WP 200EM

Model	Art. no.	Capacity kg	Max platform height mm	Lowest height mm	Length mm	Width mm	Height mm	Platform LxW mm	Lift time mm/sec	Batteries	Charger	Weight kg	Note
WP 130	87674-BE	130	1745	105	845	532	1915	500 x 500	125	24V 9Ah	2A/24V	61	
WP 130EM	87675-BE	130	2145	105	845	532	2315	500 x 500	125	24V 9Ah	2A/24V	63	
WP 200	87677-BE	200	1735	95	845	532	1965	500 x 500	125	24V 9Ah	3A/24V	65	
WP 200EM	87678-BE	200	2135	95	845	532	2365	500 x 500	125	24V 9Ah	3A/24V	67	

Prices include: Charger and platform in painted aluminium 614773. When selecting a different tool, the price for the included tool is deducted from the total price.

Lift capacity valid for evenly distributed load. All models can be delivered in conductive execution.

## Tools and accessories for Work Positioners - WP by EdmoLift

### Platform in painted aluminium

Standard platform, dimensions LxW 500x500 mm, available in other dimensions.



Art. no.: 614773 WP 130 WP 200

### Platform in painted steel

Dimensions LxW 500x500 mm, available in other dimensions.



Art. no.: 614769 WP 130 WP 200

### Platform in stainless steel

Dimensions LxW 500x500 mm, available in other dimensions.

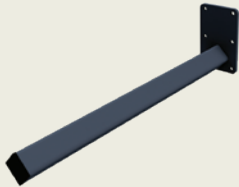


Art. no.: 614768 WP 130 WP 200

## Tools and accessories for Work Positioners – WP by EdmoLift

## Reel mandrel

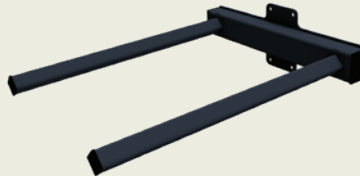
Length 500 mm, 40x40 mm, available in other dimensions.



Art. no.: 614744 **WP 130** **WP 200**

## Twin mandrel

Length 500 mm, c-c 350 mm, available in other dimensions.



Art. no.: 614784 **WP 130** **WP 200**

## Jib arm

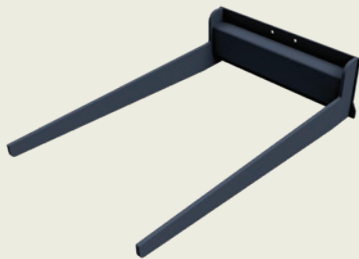
Length 600 mm, lift capacity varies depending on load's position, available in other dimensions.



Art. no.: 614746 **WP 130** **WP 200**

## Lifting fork

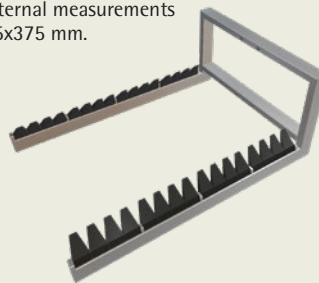
Internal measurements LxW 600x375 mm, available in other dimensions.



Art. no.: 614782 **WP 130** **WP 200**

## Lifting fork KLT

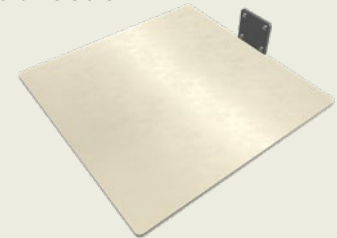
For KLT containers with narrow receiving edge. Internal measurements LxW 585x375 mm.



Art. no.: 87416 **WP 130**

## Plastic platform

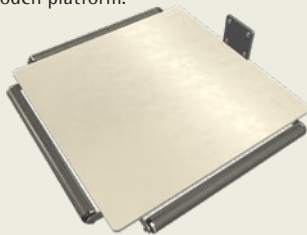
Dimensions LxW 495x495 mm, available in other dimensions.



Art. no.: 87364 **WP 130**

## Plastic platform with 3 load rollers

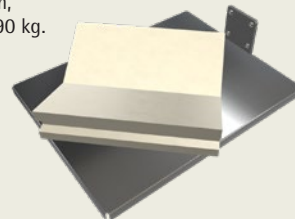
Dimensions LxW 495x495 mm, also available with wooden platform.



Art. no.: 87366 **WP 130**

## Platform in stainless steel + V-cradle

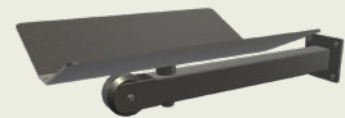
Platform in stainless steel, V-cradle made of plastic LxWxH 340x290x80 mm, max. width of reel Ø600 mm, lift capacity 90 kg.



Art. no.: 87412 **WP 130**

## Reel mandrel with front roller and V-cradle

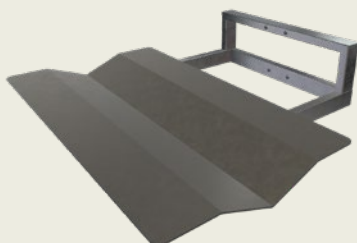
Max. width of reel Ø600 mm, lift capacity 60 kg



Art. no.: 87371 **WP 130**

## Fixed V-cradle

For long reels, dimensions V-cradle LxW 400x700 mm, lift capacity 100 kg.



Art. no.: 87725 **WP 130**

## Flex unit base

The two sledges are steplessly adjustable to fit the width of the object that needs to be handled. Reel mandrels, lifting forks and crane arms are mounted on the base unit, not included in the price. Max. width 588 mm, min. width 210 mm. Lift capacity 100 kg.



Art. no.: 89569 **WP 130**

## Quick release bracket

Part for the sledge and part for the tool



87798 & 87797

Part for sledge, art. no.: 87798 **WP 130**

Part for tool, art. no.: 87797 **WP 130**

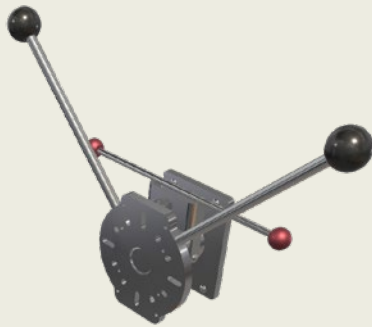
Part for sledge, art. no.: 89376 **WP 200**

Part for tool, art. no.: 89375 **WP 200**

## Tools and accessories for Work Positioners - WP by EdmoLift

### Manual turning unit

Makes fixed tools rotatable. Rotation 360° with adjustable interval of 30° or 90°. Desired tool is mounted on the turning unit, not included in the price. Lift capacity 60 kg.



Art. no.: 89477 WP 130

### Canister tipper 60 liter

Designed for standard size 60 liter canisters. The canister is attached to the carrying handle with a hook. Lifts and rotates the canister to empty its content. Rotation 360° with adjustable interval of 30° or 90°. Lift capacity 80kg.



Art. no.: 89568 WP 130

### Bucket and drum handler

Lifts odd size drums, buckets and cans, min Ø200 mm, max Ø400 mm. Can also handle square items depending on the specific object. Automatic retracting lashing strap which is tightened by pulling the handle by the lashing strap. Rotation 360° with adjustable interval of 30° or 90°. Lift capacity 50 kg.



Art. no.: 89480 WP 130

### Control unit

With buttons in the handle, vertically adjustable.



Art. no.: 87733 WP 130 WP 200

### Control unit

With spiral cable, dual speed 125 or 60 mm/second.



Art. no.: 87730 WP 130 WP 200

### Arrow and stickers

For level adjustment, the arrow is fixed on the sledge and the stickers on the mast, used for quick height indication.



Art. no.: 87734 WP 130 WP 200

## More tools (only compatible with other types of WP)

### Reel handler

Rotatable 90°, swing ±15°, for reels with cores of 3" (76 mm), max Ø800 mm, max. length of reel 500 mm, lift capacity 80 kg.



### Exchangeable battery with quick swap

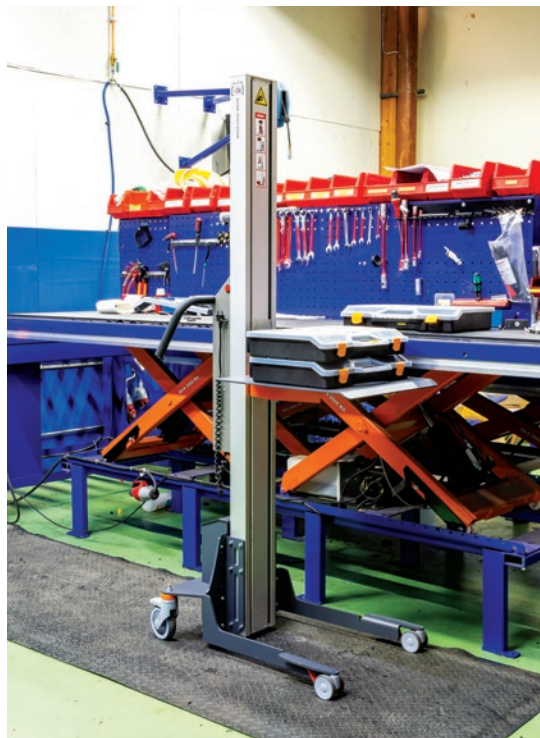
Includes wall mounted charger station and two batteries 24V/9Ah.

## Work Positioners with electrical tools

We also offer Work Positioners with motorized grip, rotation and expansion that are available for various applications and can be equipped with different types of grippers depending on the application. Contact EdmoLift for more information.



Drum turner 87924 with motorized grip and rotation



# Lifting solutions in stainless steel

– FOR AGGRESSIVE ENVIRONMENT AND HIGH REQUIREMENTS OF CLEANING



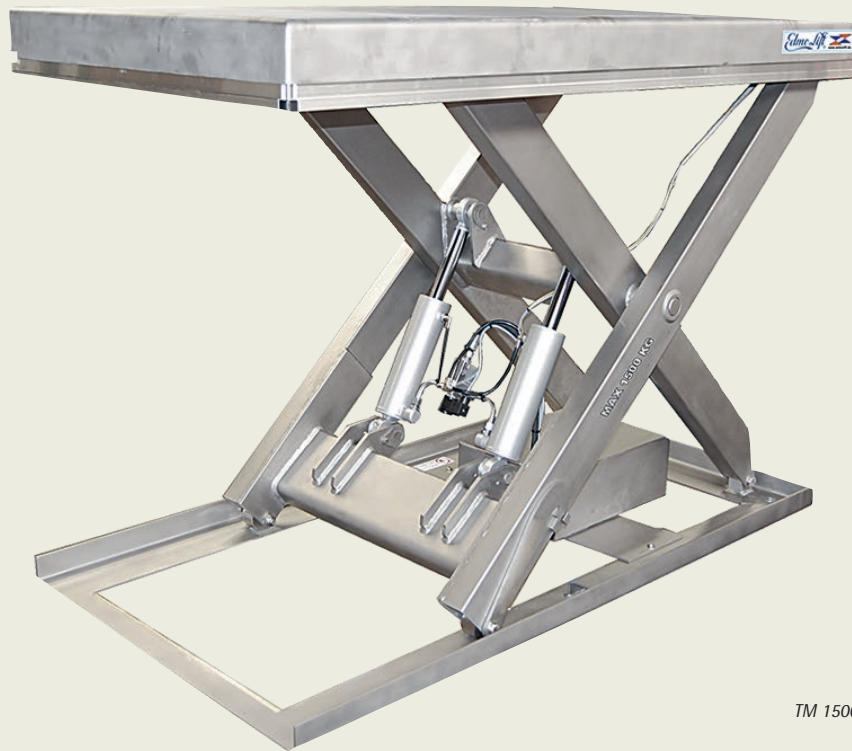
EdmoLift's stainless lift tables, work positioners and other lifting solutions are highly suitable for use in industries that set high requirements of hygiene, such as chemical, food, slaughtering and pharmaceutical industries.

The lift tables are corrosion resistant and withstand harsh environments and the use of aggressive cleaning products.

Stainless lift tables are often used in wet areas because of the production process or due to cleaning. In these conditions we recommend that the hydraulic power pack is placed in a protected area such as on the other side of a nearby wall. If these recommendations unnecessary downtime will be avoided in the future.



## Stainless steel single scissors



TM 1500SS

Our stainless lift table is made of material with high quality. The platform, base frame and scissors are stainless, in accordance with standard AISI 304/EN 1.4301 (SS 2333). A steel with very high corrosion resistance.

Axles, wheels and bolts are stainless, in accordance with standard AISI 303 / EN 1.4305. A steel with high corrosion resistance.

Nipples and pipes are of electro-zinc plated standard quality.

Wheels of stainless steel / polyurethane.

As standard cylinder type 2 are included with extra surface treatment, piston rod in stainless steel. The piston tube is sandblasted, primed and painted with two coats of polyurethane 2-component paint.

Nipples are electro-zinc plated.

### QUOTES PROVIDED FOR SELECTABLE CYLINDERS

**Cylinder type 1:** regular surface treatment with polyurethane 2-component paint. Nipples are electro-zinc plated.

**Cylinder type 3 in stainless steel:** cylinder of AISI 316/EN 1.4401 (SS 2347), piston rod of AISI 329/EN 1.4460, cylinder tube in AISI 420/EN 1.4031, nipples of AISI 316/EN 1.4401 (SS 2347).

### TECHNICAL SPECIFICATIONS

Stainless lift tables are often used in wet areas because of the production process or due to cleaning. In these conditions we recommend that the hydraulic power pack is placed in a protected area e.g. on the other side of a nearby wall. If these recommendations unnecessary downtime will be avoided in the future.

### AS STANDARD ALL STAINLESS STEEL LIFT TABLES ARE EQUIPPED WITH:

- ▶ Pressure compensating lowering valve
- ▶ Safety trip bar on all sides
- ▶ Maintenance safety bars for service
- ▶ Power supply: 3 x 415 V/50Hz + earth + 0
- ▶ Control voltage 24 V DC
- ▶ Electric box: IP 65
- ▶ Switches: IP 65
- ▶ Motor: IP 54
- ▶ Filter system: Filter on oil tank and on oil return side
- ▶ Noise level: 50-52 dB
- ▶ The products are CE marked and conform to the basic requirements of the lifting table standard EN 1570-1

Model	Art. no.	Capacity kg	Lift stroke mm	Lowest height mm	Length mm	Width mm	Lift time sec	kW	Weight kg pack. incl.	Note
TR 500SS	612253	500	550	160	900	650	11	0,37	115	
TL 1000SS	612254	1000	830	180	1300	650	18	0,75	160	
TL 2000SS	612255	2000	820	230	1300	800	27	0,75	240	
TM 1500SS	612256	1500	1100	230	1700	900	27	0,75	315	



TLD 1000SS

## Stainless steel vertical double scissors

A lift table with several scissors units mounted vertically makes it possible to achieve a higher lift movement than is possible with a single scissor.

Model	Art. no.	Capacity kg	Lift stroke mm	Lowest height mm	Length mm	Width mm	Lift time sec	kW	Weight kg pack. incl.	Note
TRD 500SS	612257	500	1100	270	900	650	18	0,37	140	
TLD 1000SS	612258	1000	1600	375	1300	800	30	0,75	310	



TUB 1000SS

## Low profile lift tables in stainless steel

EdmoLift's stainless lift table TUB 1000 has a very low profile, which makes pit mounting superfluous. With a regular pallet trolley, the pallet can easily be loaded directly on the U-shaped platform. The lift tables can easily be moved for cleaning or for reorganising in the production. Our series of low profile lift tables is specially adapted for load pallets. The TCB tables have a solid platform.

Model	Art. no.	Capacity kg	Lift stroke mm	Lowest height mm	Length mm	Width mm	Lift time sec	kW	Weight kg pack. incl.	Note
TCB 1000SS*	612259	1000	715	85	1500	800	12	0,75	260	
TUB 1000SS*	612260	1000	715	85	1450	1085	12	0,75	235	

\*External hydraulic power pack in cover

## Stainless Steel Work Positioners



### STAINLESS STEEL WORK POSITIONERS DESIGNED FOR FOOD AND PHARMA INDUSTRY

The lifting trolleys in the stainless steel series effectively handle weights of up to 300 kg and is designed with the best ergonomics and flexibility in mind. The entire series can be specially adapted to suit your specific needs.

The models WP 90 SS, 200 SS and 300 SS are designed in AISI 304 stainless steel and are IP66 classified, which makes them completely immersible. The WP 70 SS models are semi-stainless with mast in aluminium, leg and handle in stainless steel. These models cannot be flushed.

The products are designed for use in confined spaces. By handling heavy loads with a lifting motion where as little muscle power as possible is used, the risk of injuries caused by repetitive lifting, moving and handling of heavy objects is minimised.

The lifting trolleys in the stainless series distinguish themselves with its versatile adaption options, robust design and outstanding manoeuvrability.

#### CONTROL UNIT

WP 90 SS, 200 SS and 300 SS models are equipped with gentle start and soft as well as control unit with two speeds. WP 70 SS has the same control unit as the lifts in the commando series and provides easy access from all sides of the lift.

#### MAST AND LIFT FUNCTION

The mast has a steel sledge with precision ball bearings, the lifting trolleys are fitted with strong energy-efficient 24VDC motors and powered by a steel reinforced belt that does not need any special maintenance.

#### SAFETY

All parts are shielded. The lift has overload protection and safety circuit. The lifters are supplied with a smart charger which automatically stops charging the battery once it is fully charged.

#### PRODUCT FEATURES

- ▶ Electro polished stainless steel and semi-stainless models
- ▶ The market's fastest lifting speed – 125 and 270 mm/second
- ▶ Outstanding manoeuvrability
- ▶ Soft start and stop
- ▶ Silent operation
- ▶ Wide range of tools and options such as platforms, reel handlers, v-cradles, control units and leg frames.
- ▶ Operationally reliable – steel reinforced belt instead of chain.
- ▶ Two lifting speeds, WP 90 SS, 200 SS and 300 SS



Control unit for WP 70 SS models



Control unit for WP 90 SS Q, 200 SS models

## Stainless steel work positioners

► Other leg frames are available upon request.



WP 70 SS



WP 90 SS Q



WP 200 SS

Model	Art. no.	Capacity kg	Max platform height mm	Lowest height mm	Length mm	Width mm	Height mm	platform LxW mm	Lift time mm/sec	Batteries	Charger	Weight kg	Note
WP 70S SS*	87686	70	1051	101	747	560	1217	495 x 495	125	24V 7,2Ah	1,8A/24V	29	
WP 70 SS*	87687	70	1346	101	747	560	1512	495 x 495	125	24V 7,2Ah	1,8A/24V	30	
WP 70EM SS*	87688	70	1746	101	747	560	1912	495 x 495	125	24V 7,2Ah	1,8A/24V	32	
WP 90S SS Q	87761	90	1015	128	746	550	1221	495 x 495	125/270	24V 9Ah	1,8A/24V	41	
WP 90 SS Q	87689	90	1304	128	746	550	1516	495 x 495	125/270	24V 9Ah	1,8A/24V	44	
WP 90EM SS Q	87690	90	1710	128	746	550	1918	495 x 495	125/270	24V 9Ah	1,8A/24V	47	
WP 200S SS	87679	200	1280	80	899	550	1610	500 x 400	125	24V 18Ah	1,8A/24V	67	
WP 200 SS	87680	200	1650	80	899	550	1980	500 x 400	125	24V 18Ah	1,8A/24V	71	
WP 200EM SS	87681	200	2080	80	899	550	2410	500 x 400	125	24V 18Ah	1,8A/24V	76	
WP 300 SS	87682	300	1415	126	1120	580	1970	600 x 600	125	24V 18Ah	3A/24V	105	
WP 300EM SS	87683	300	1765	126	1120	580	2320	600 x 600	125	24V 18Ah	3A/24V	115	

Charger included. All models can be delivered in conductive execution.  
\*Semi-stainless, most in aluminium  
Lift capacity valid for evenly distributed load.

The prices include: plastic platform 87796 for WP 70 SS and WP 90 SS, platform in stainless steel 87613 for WP 200 SS and platform in stainless steel 87892 for WP 300 SS. When selecting a different tool, the price for the included tool is deducted from the total price.

## Tools and accessories for stainless steel Work Positioners

### Platform in stainless steel

Dimensions LxW 500x500 mm (WP 300 LxW 570x380 mm), available in other dimensions.



Art. no.: 87793 WP 70 WP 90  
Art. no.: 87613 WP 200  
Art. no.: 87620 WP 300

### Plastic platform

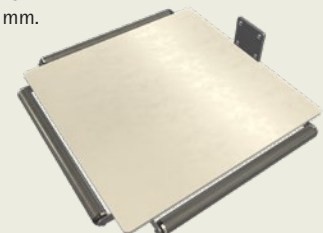
Dimensions LxW 495x495 mm, available in other dimensions.



Art. no.: 87796 WP 70 WP 90

### Plastic platform with 3 load rollers

Dimensions LxW 495x495 mm.



Art. no.: 87794 WP 70 WP 90

## Tools and accessories for stainless steel Work Positioners

### Flex unit base

The two sledges are steplessly adjustable to fit the width of the object that needs to be handled. Reel mandrels, lifting forks and crane arms are mounted on the base unit, not included in the price. Max. width 588 mm, min. width 210 mm. Lift capacity WP 70=50 kg, WP 90=70 kg.



Art. no.: 89569 **WP 70** **WP 90**

### Reel mandrel

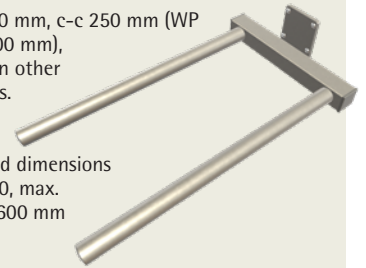
Length 500 mm, Ø60 mm, available in other dimensions. Customized length for WP 300, max. 800 mm.



Art. no.: 87792 **WP 70** **WP 90**  
 Art. no.: 87616 **WP 200**  
 Art. no.: 87898 **WP 300**

### Twin mandrel

Length 500 mm, c-c 250 mm (WP 200 c-c 300 mm), available in other dimensions.

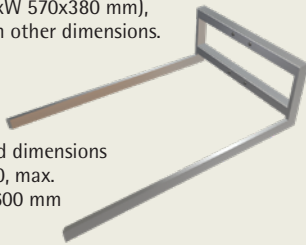


Customized dimensions for WP 300, max. LxW 800x600 mm

Art. no.: 87790 **WP 70** **WP 90**  
 Art. no.: 87617 **WP 200**  
 Art. no.: 87900 **WP 300**

### Lifting fork

Internal measurements LxW 585x375 mm (WP 200 LxW 570x380 mm), available in other dimensions.

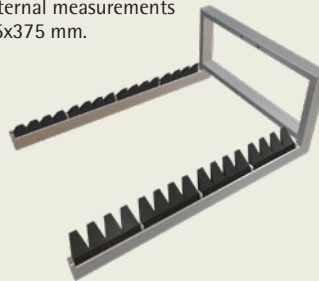


Customized dimensions for WP 300, max. LxW 800x600 mm

Art. no.: 87787 **WP 70** **WP 90**  
 Art. no.: 87614 **WP 200**  
 Art. no.: 87901 **WP 300**

### Lifting fork KLT

For KLT containers with narrow receiving edge. Internal measurements LxW 585x375 mm.



Art. no.: 87416 **WP 70** **WP 90**

### Reel mandrel with front roller and V-cradle

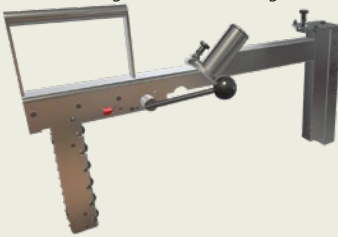
Max. width of reel Ø600 mm, lift capacity WP 70=30 kg, WP 90=60 kg.



Art. no.: 87788 **WP 70** **WP 90**

### Reel handler

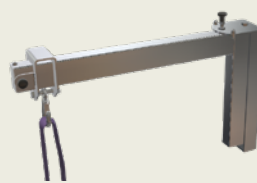
Rotatable 90°, swing ±15°, for reels with core of 3" (76 mm), max. Ø900 mm, max. length of reel 500 mm, lift capacity WP 80 and 90 = 50 kg, WP 130 = 80 kg, WP 200 = 100 kg.



Art. no.: 87618 **WP 90** **WP 200**

### Jib arm with lifting hook

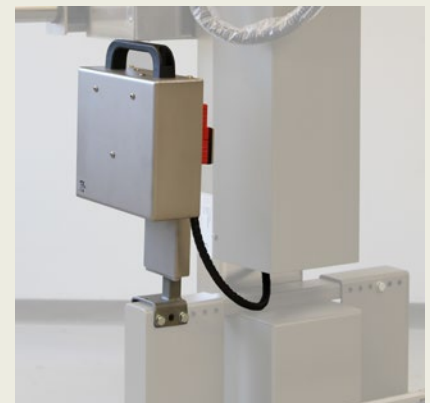
Length 600 mm, swing ±15° (WP 200 and WP 300 has no swing), Lift capacity depends of position of load. Available in other dimensions.



Art. no.: 87723 **WP 90**  
 Art. no.: 87619 **WP 200**  
 Art. no.: 87935 **WP 300**

### Exchangeable battery with quick swap

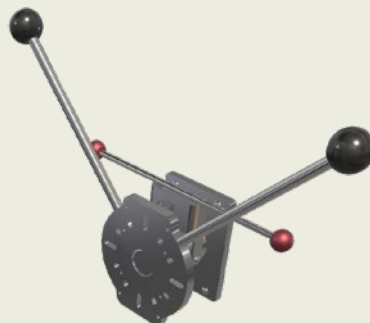
Includes wall mounted charger station and two batteries 24V/9Ah.



Art. no.: 87759 **WP 200**

### Manual turning unit

Makes fixed tools rotatable. Rotation 360° with adjustable interval of 30° or 90°. Desired tool is mounted on the turning unit, not included in the price. Lift capacity 60 kg.



Art. no.: 89477 **WP 70** **WP 90**

## Tools and accessories for stainless steel Work Positioners

### Quick release bracket

Part for the sledge and part for the tool

- Start kit\*, art. no.: 89129 **WP 70**
- Part for tool, art. no.: 89130 **WP 70**
- Part for sledge, art. no.: 87798 **WP 90** **WP 130**
- Part for tool, art. no.: 87797 **WP 90** **WP 130**
- Part for sledge, art. no.: 89376 **WP 200**
- Part for tool, art. no.: 89375 **WP 200**

\*includes two quick release bracket (89130) part for tool and one quick release part for sledge

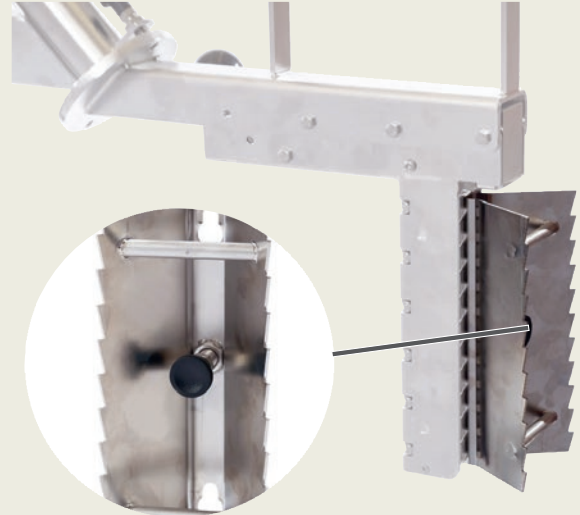


87798 & 87797

The bracket for WP 70 has another design

### Mandrel enlarger

For handling of reels with a core of 6" (152 mm), quick release bracket, fits reel rotator 87618. Other model available for reels with 10" (254 mm) core.



Art. no.: 87627 **WP 90** **WP 200** **WP 300**

## Work Positioners with electrical tools

We also offer stainless steel Work Positioners with motorized grip, rotation and expansion that are available for various applications and can be equipped with different types of grippers depending on the application.

Contact EdmoLift for more information.



Reel handler 87923 with motorized expansion and rotation



Drum turner 87924 with motorized grip and rotation